

The TR4000D-C600/ TR4500D-C600 IR Camera: Long-Range Cooled Thermal Imager— Your Surveillance Solution

Description

TR4000D-C600 and TR4500D-C600 are high performance thermal imagers optimized for long-range surveillance & tracking in mobile systems or field installations. The systems make use of the third generation of high quantum efficiency InSb focal plane arrays, operating in the 3-5 μ m waveband, in full snap shot mode. The TR4000D-C600 incorporates a 320x256 pixels, 30 μ m pitch InSb focal plane array. The TR4500D-C600 incorporates a 640x480 pixels, 15 μ m pitch InSb focal plane array.

Both cameras are incorporate a sensitive InSb focal plane array sensor, state-of-the-art 14-bit digital electronics and motorized optics, in a compact, weatherproof housing. The cameras are the perfect choice for thermal IR measurement in airborne, naval or ground operations.

Key Features

Spatial Resolution:

TR4000D-C600 - 320x256 pixels with 30 μ m pitch

TR4500D-C600 - 640x512 pixels w/ 15 μ m pitch

Cooling Type:

Integral long life Stirling cooler

Field of View:

Continuous zoom (18.3°x14.7° to 0.9°x0.7°)

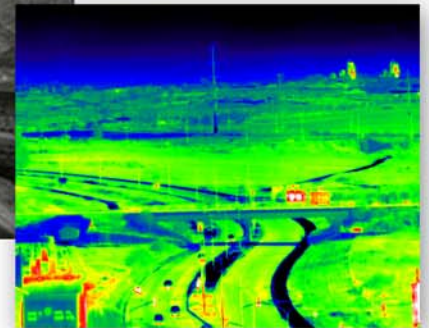
Control of the Camera:

Through RS232 software protocol

Auto & Manual Focus

Analog Video Output:

PAL/NTSC



Applications

This unique combination of night vision power is Cantronic's solution to the increase need for security and homeland protection at a broad range of facilities and infrastructure such as:

- Bridges; Airports; Seaports; Subways
- Military Facilities
- Nuclear Power Plants
- Perimeter Security
- Industrial Applications
- Governmental Facilities

TR4000D-C600/ TR4500D-C600

Specifications

System Specification:

	TR4000D-C600	TR4500D-C600
Number of pixels	320x256	640x512
Pitch	30 μ m	15 μ m

TR4000D-C600/TR4500D-C600: Common Specifications

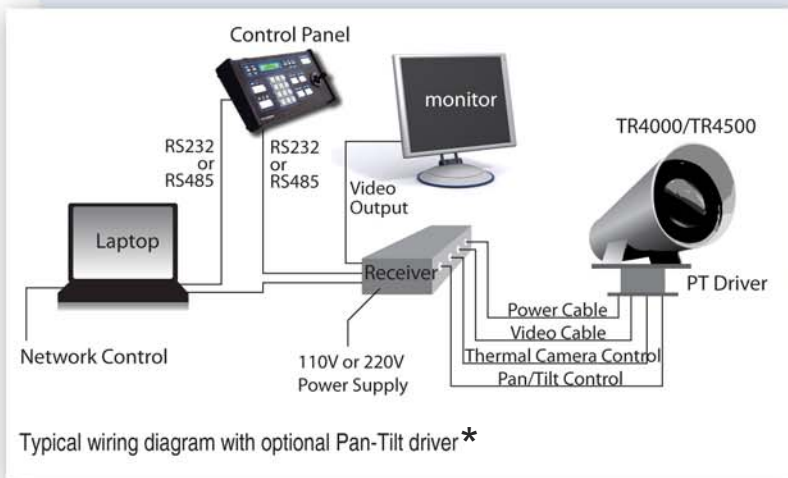
	TR4000D-C600/TR4500D-C600
Focal Plane Array	InSb
Spectral Range	3 - 5 μ m
Image Mode	Snap Shot
Cooling	Stirling Cooler
Optics (Motorized)	Continuous Zoom
Focal Length	30mm to 600mm
Horizontal Field of View	18.3° to 0.9°
Vertical Field of View	14.7° to 0.7°
F Number	f/4
NETD	< 20 mK
Analog Video Output	NTSC or PAL
System Control	RS232 or RS485
Operating Temperature	- 20°C to +55°C
Storage Temperature	- 40°C to +70°C
Relative Humidity	Up to 90%
Dimensions	234 (H) x 238 (W) x 590 (L) mm
Weight	<10KG
Power Supply	12 - 24 V DC
Power Consumption	< 35 W
Environmental Qualification	MIL-STD 810E



How to Order:

TR4000D-C600 N
TR4500D-C600 N

↑
Video Output
N: NTSC
P: PAL



* The items shown at left include optional items: PT driver, Receiver, Control panel, Cable Kits, Laptop PC, Monitor

Toll Free: 1.866.391.6970