

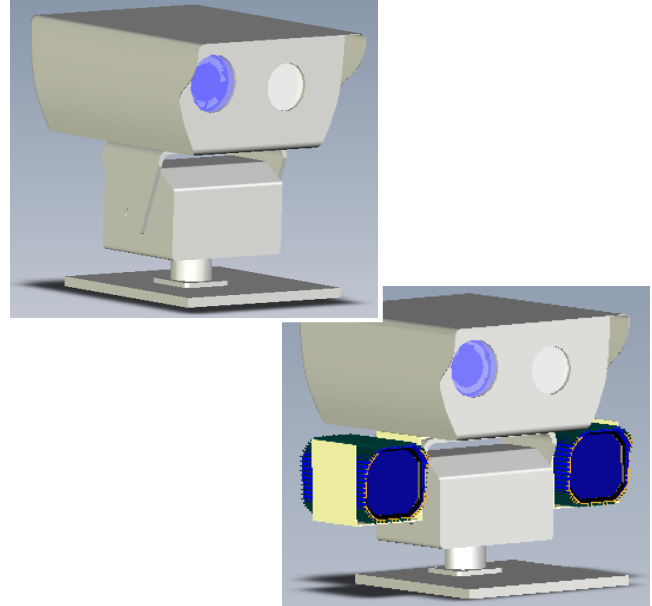
## DT3000 Series Dual-Vision Thermal Camera System

### Overview

The DT3000 Dual-Vision Thermal Infrared Night Vision Camera is the ultimate security product designed for short to mid-range surveillance in total darkness and extreme conditions. Cantronic's expertise in this technology provides a complete day- and night-vision solution with a full spectrum of infrared wavelength.

We utilize an integrated thermostat controlled heater for adverse environmental conditions. With the state-of-the-art passive infrared thermal seeking technology the camera is perfect for short and mid-range surveillance detection.

The optional patented Illuminator technology provides superior long range illumination in total darkness. It allows security professionals identify suspicious persons and helps to evaluate a complete site and promptly deal with any situation from any location.



Optional with Illuminators

### Outstanding Features

- Dual-Vision Technology
- 320x240 VOx Uncooled FPA
- NETD of 75mK @ f/1
- Automatic adjustment of contrast and brightness
- Long operating life
- Robust and durable for harsh environments
- 15-bit DSP Technology CCD Visual Camera
- Superb sensitivity
- 540TVL resolution
- XF-Dynamic for unsurpassed wide dynamic range



### Applications

This unique combination of night vision power is Cantronic's solution to increase need for security and homeland protection at a broad Range of facilities and infrastructure such as:

- Bridges, Airports, Seaports, Subways
- Military Facilities
- Nuclear Power Plants
- Perimeter Security
- Industrial Applications
- Governmental Facilities
- Homeland defense
- Border patrol
- Commercial Facilities

## Specification

### Thermal Imaging System

Focal Plane Array	VOx microbolometer		
Number of Pixels	320 x 240		
Spectral Range	8 - 14µm		
Pitch	23.5µm		
Optics (motorized)	50mm		100mm
Horizontal Field of View	10.3°		5.2°
Vertical Field of View	7.8°		3.9°
Detection Range Human	900m		1700m
Detection Range NATO target (2.3m x 2.3m)	2000m		4100m
F Number	f/1.0		
NETD	<75mK @ f/1, 30Hz		
Video Output	PAL or NTSC		
Digital Video Output	Ethernet		
System Control	RS232		
Power Supply	12V DC		
Power Consumption	< 6 W		
Environmental Qualification	MIL-STD 810E		

### Visual Camera

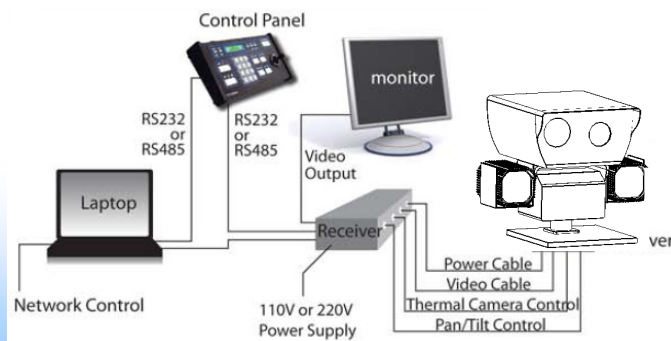
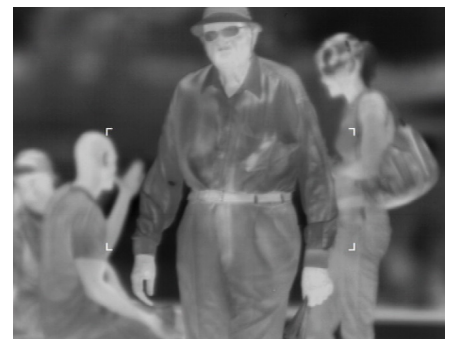
Type	1/2-inch Digital CCD		
Technology	15-bit DSP		
Resolution (H x V)	752 x 582 (PAL) / 768 x 492 (NTSC)		
Horizontal Resolution	540TVL		
Signal to Noise Ratio	>50dB		
Min. Illumination	0.18 lux / 0.024 lux (monochrome mode)		
Sensitivity (Full Video)	1.4 lux		
Auto Black / Noise reduction	on, off selectable		
Range	32x dynamic range enhancement		
White balance	ATW(2500-10000K), AWB hold, manual WB selectable		
Lens	7.5-120mm motorized		10-300mm motorized
Angle of View (H x V)	47.0° - 3.1° x 35.4° - 2.4°		35.5° - 1.25° x 26.8° - 0.94°
Zoom	16x continuous		30x continuous

### Pan/Tilt

Input Voltage	120VAC, 60Hz - 230VAC, 50Hz		
PTZ Pan range	0-355 degrees		
Pan Speed	6°/sec		
PTZ Tilt range	-90° to 90°		
Tilt speed	3°/sec		
Braking	mechanical		
Preset Positioning	optional		
Environment	Indoor/Outdoor		

### System

Operating Temperature	-20°C to +50°C		
Storage Temperature	-25°C to +70°C		
Power Input	110VAC or 220VAC		
Weight w/o Illuminators	~34kg		
Weight with Illuminators	~38kg		
Dimension w/o Illuminators (DxHxW)	554 x 557 x 480mm		
Dimension with Illuminators (DxHxW)	554 x 557 x 640mm		
Enclosure standard	IP54		



### Cantronic Systems Inc.

63A Clipper Street  
Coquitlam, BC V3K 6X2, Canada  
Tel: +1.604.516.6667  
Toll Free: +1.866.391.6970  
Fax: +1.604.516.6618  
sales@cantronics.com  
www.cantronics.com

### QWIP Technologies Inc. – US subsidiary

499 Nibus Street, Brea, CA 92821  
Tel: +1.714.529.7947  
Fax: +1.714.529.7946  
sales@qwip.com  
www.qwip.com

Specifications are subject to change without notice.  
© Cantronic Systems Inc. 2007 ISO9001 Certified