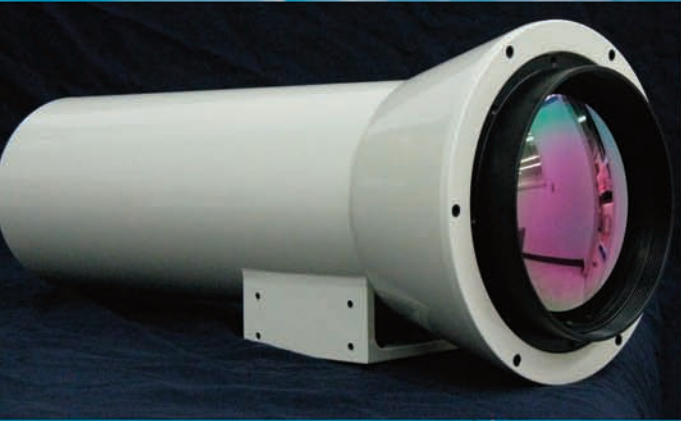


TR4300/TR4700

Long-Range Cooled IR Camera



TR4300 / TR4700 are high performance thermal imagers optimized for long-range surveillance & tracking in mobile systems or field installations.

The systems make use of the third generation of high quantum efficiency InSb focal plane arrays, operating in the 3-5 μ m waveband, in full snap shot mode.

The TR4300 incorporates a 320x256 pixels, 30 μ m pitch InSb focal plane array. The TR4700 incorporates a 640x480 pixels, 15 μ m pitch InSb focal plane array.

Both cameras are incorporate a sensitive InSb focal plane array sensor, state-of-the-art 14-bit digital electronics and motorized optics, in a compact, weatherproof housing.



Key Features

Spatial Resolution:

TR4300 - 320x256 pixels with 30 μ m pitch
TR4700 - 640x512 pixels w/ 15 μ m pitch

Cooling Type:

Integral long life Stirling cooler

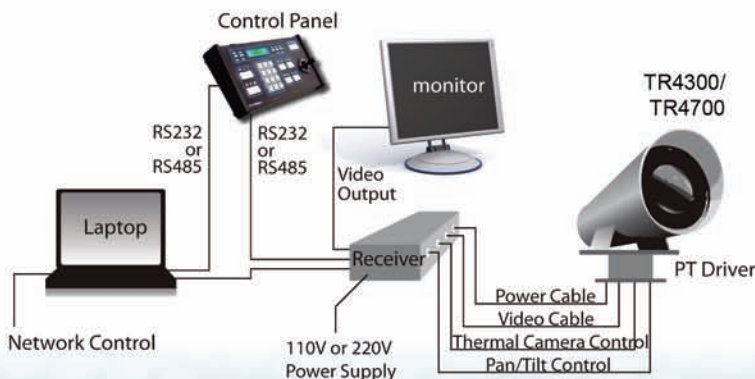
Field of View:

Continuous zoom (18.3°x14.7° to 0.9°x0.7°)

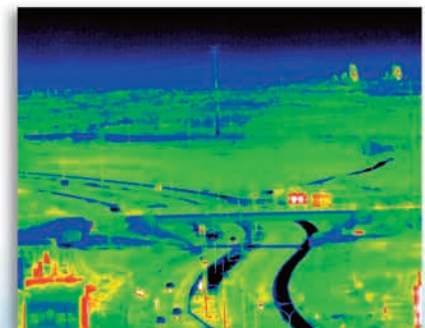
Applications

This unique combination of night vision power is Cantronic's solution to the increase need for security and homeland protection at a broad range of facilities and infrastructure such as:

- Bridges; Airports; Seaports; Subways
- Military Facilities
- Nuclear Power Plants
- Perimeter Security
- Industrial Applications
- Governmental Facilities



Typical wiring diagram with optional Pan-Tilt driver



TR4300/TR4700

Long-Range Cooled IR Camera

Specifications

	TR4300	TR4700
Number of pixels	320x256	640x512
Pitch	30 µm	15 µm
TR4300 / TR4700 (Common Specifications)		
Focal Plane Array	InSb	
Spectral Range	3 - 5 µm	
Image Mode	Snap Shot	
Cooling	Stirling Cooler	
Optics (Motorized)	Continuous Zoom, Auto or Manual Focus	
Focal Length	30mm to 600mm	
Horizontal Field of View	18.3° to 0.9°	
Vertical Field of View	14.7° to 0.7°	
F Number	f/4	
NETD	< 20 mK	
Analog Video Output	NTSC or PAL	
System Control	RS232 or RS422	
Operating Temperature	- 32°C to +55°C	
Storage Temperature	- 40°C to +70°C	
Relative Humidity	Up to 90%	
Dimensions	234(H) x 238(W) x 590(L)mm	
Weight	< 10.0 Kg	
Power Supply	12 - 24 V DC	
Power Consumption	< 35 W	
Environmental Qualification	MIL-STD 810E	

How to Order

TR4300-C600 N
TR4700-C600 N

↑
Video Output
N: NTSC
P: PAL

Cantronic Systems Inc.
63A Clipper Street
Coquitlam, BC V3K 6X2, Canada
Tel: +1.604.516.6667
Toll Free: 1.866.391.6970
Fax: +1.604.516.6618
sales@cantronics.com
www.cantronics.com