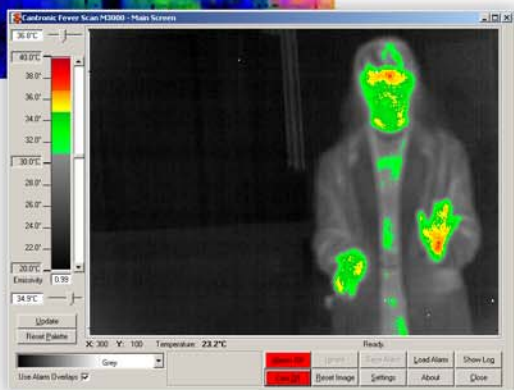


## FeverScan M3000S



### Key Features

- Pre-definable values for abnormal body temperatures
- Grayscale image using red to indicate high temperatures.
- Adjustable display palette temperature range
- Ability to “spot-check” with mouse for accurate crosshair temperature readings
- Customizable high-temperature alarm
- Log file records alarm data
- Turn-key system contains thermal camera head, display software and data acquisition/recording system.

### Overview of System

The FeverScan M3000S System is designed for mass screening of public areas. The system is used to find individuals with elevated body temperatures. As a group of people walk past the camera head, a thermal image is displayed on the nearby monitor. Body temperatures above a predefined value, such as a fever, are visually identified. These individuals can then be diverted and further assessed by medical personnel.

The M3000S is a dynamic real-time thermal imaging camera system. It is capable of evaluating hundreds of people per minute—pedestrian flow is not restricted. The FeverScan M3000S is ideal for mass-screening for those infected with SARS (Severe Acute Respiratory Syndrome), avian (bird) flu, and swine flu—in public transportation situations like airports, railway/subway stations, seaports, and other public facilities.

# FeverScan M3000S

## Specifications

### Camera

Lens	25mm or 50mm
Focal Plane Array	Micro-bolometer (Amorphous silicon or vanadium oxide)
Spectral Range	8 - 14 $\mu$ m
Number of Pixels	320 x 240
NETD	$\leq 0.08$ °C @ 30°C

### Software User Interface

Data Display	640 x 480 on screen/processing
Visual Alarm	User definable temperature scale and alarm trigger point
Alarm Function	Ignore Mode or Save Alarm Mode (saves images to hard drive and creates log file for easy retrieval and review)

### System Options

VGA Monitor  
Printer  
Tripod



## FeverScan M3000S System Illustration

