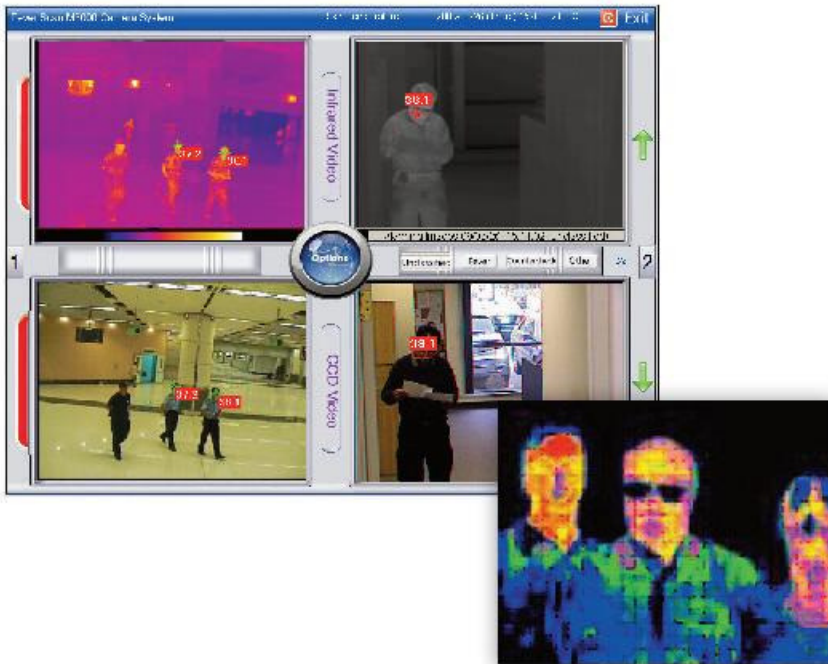


FeverScan M3000D

Dual Vision Thermal Imaging Camera System



Key Features

- Dual Vision (thermal and visual) system for easy screening
- Pre-definable values for abnormal body temperatures
- Grayscale image using red to indicate high temperatures.
- Adjustable display palette temperature range
- Ability to “spot-check” with mouse for accurate crosshair temperature readings
- Customizable high-temperature alarm
- Log file records alarm data
- Turn-key system contains thermal camera head, display software and data acquisition/recording system.

System Overview

The FeverScan M3000D System is designed for mass screening of public areas, and is used to find individuals with elevated body temperatures. As a target and objects pass the camera field of view, thermal and visual images are displayed on the nearby monitor. Target temperatures above a predefined value are displayed. Those individuals can then be diverted and further assessed by medical personnel.

FeverScan M3000D is a system improvement upon our popular M3000/M3000S system. It adds a visual sensor to the thermal, creating a dual sensor camera head. The visual/thermal comparison allows for easier/faster screening—the operator can screen for fever and identify at the same time.

The FeverScan M3000D is capable of evaluating hundreds of targets per minute. The FeverScan M3000D is ideal for mass-screening in public transport situations: airports, railway/subway stations, seaports, and other public facilities

FeverScan M3000D

Dual Vision Thermal Imaging Camera System

Specifications

Thermal Camera Module

Sensor Type	Microbolometer (Amorphous Silicon or Vanadium Oxide)
Format	320 x 240 Pixels
Spectral Range	8 -14 μ m
NETD	0.08°C @ 30°C
Lens	40mm F/1.0
Field of View	20° x 15°
Image Frequency	9Hz / 30Hz

Visual Camera Module

Sensor Type	Sony Super HAD CCD
Format	752 (H) x 582 (V)
Resolution	480 Line
Signal / Noise Ratio	>49dB

Software User Interface

Data Display	640 x 480 on screen/processing
Visual Alarm	User definable temperature scale and alarm trigger point
Alarm Function	Ignore Mode or Save Alarm Mode (saves images to hard drive and creates log file for easy retrieval and review)

System

Video Output	NTSC or PAL
Power Input	110VAC 6A or 220VAC 3A
Operating Temperature	-10° to 50°C
Operating Humidity	<90% RH
Cabinet Dimension (LxWxH)	70cm x 64cm x 110cm
Camera Dimension (LxWxH)	19cm x 12cm x 28cm

*Any image frequency above 9 Hz requires an export license.



How to Order

Model No.: FSM3000D

Cantronic Systems Inc.

(Worldwide Headquarters)

63A Clipper Street
Coquitlam, BC V3K 6X2 Canada
Phone: +1.604.516.6667
Toll Free: 1.866.391.6970
Fax: +1.604.516.6618
www.cantronics.com
sales@cantronics.com

QWIP Tech. Inc.

(US Subsidiary)

499 Nibus Street
Brea, California 92821
Phone: 714.529.7947
Fax: 714.529.7946
www.qwip.com
sales@qwip.com